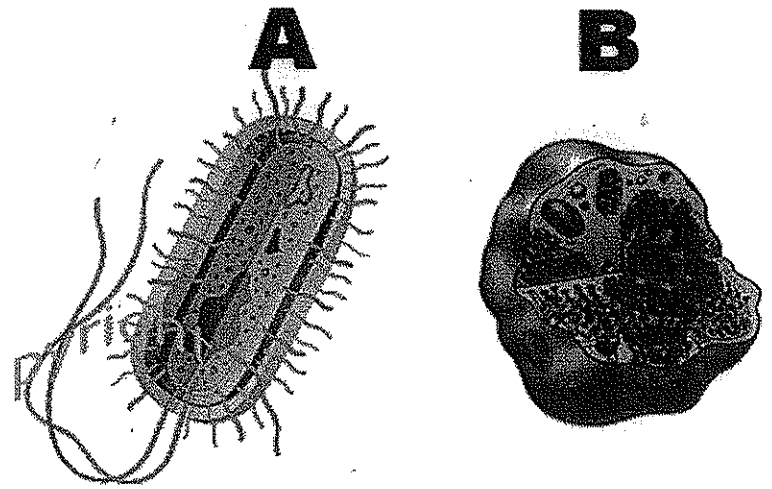


Student Tasks – Science

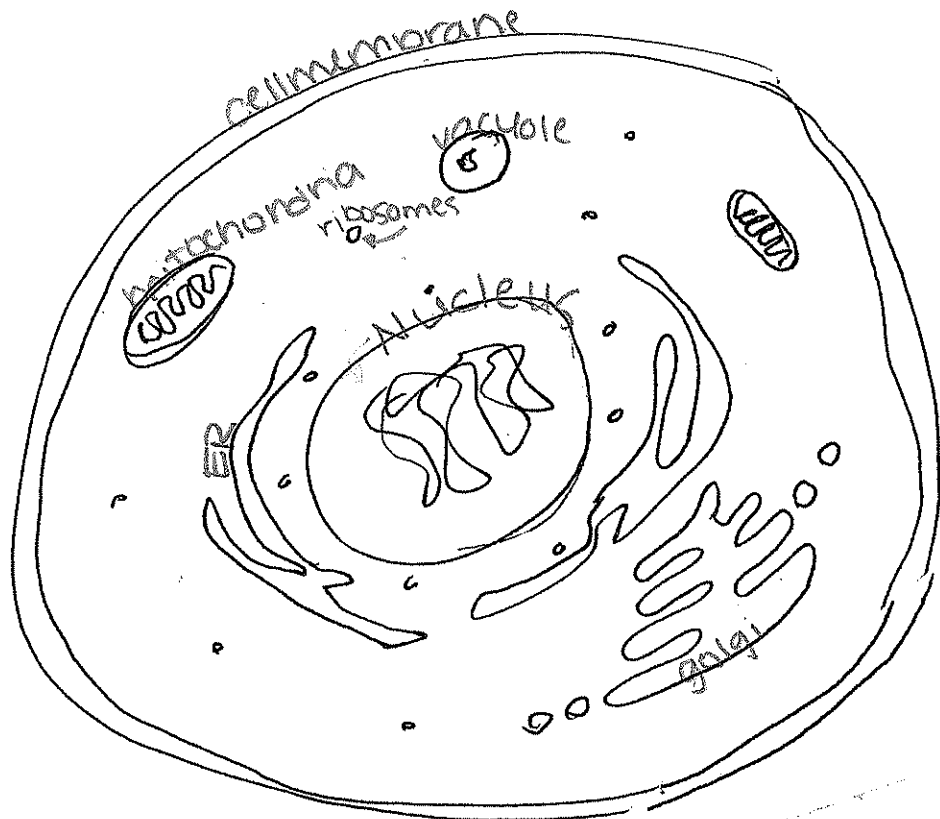
1. Describe and identify the similarities and difference between the Prokaryotic Cell in Photo A and the Eukaryotic Cell in photo B. (Blooms – Level 1 “Remembering”)



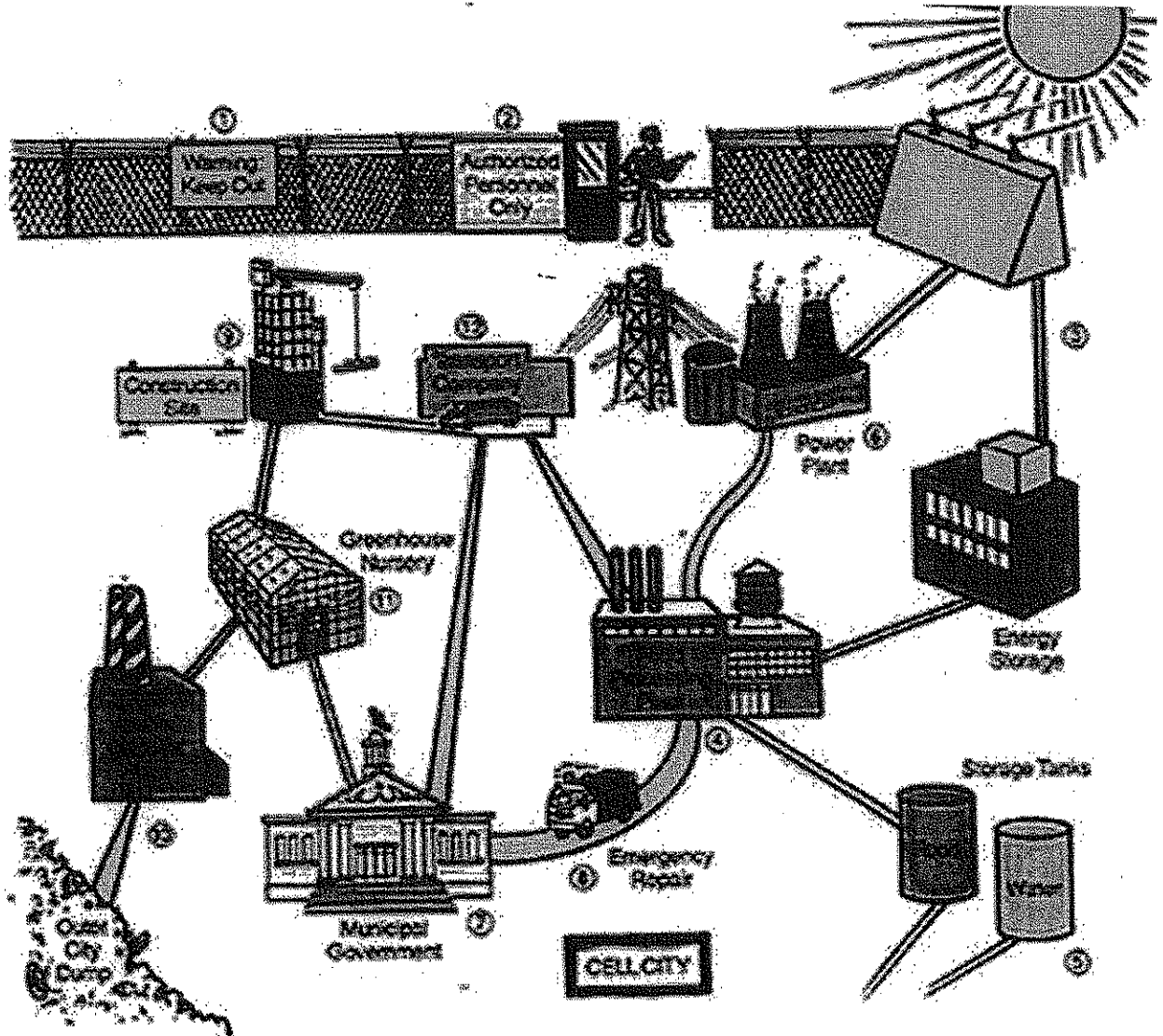
Student Answer: The similarities in prokaryotic and eukaryotic cells is that they both have DNA, other organelles, and a cell membrane. The differences are the prokaryotic cell doesn't have a nucleus, but the eukaryotic cell does, and the prokaryotic has tails to make it mobile, but the Eukaryotic cell doesn't.

2. Integrate the organelle names into the picture of the animal cell in the proper location. Find each organelle and label it appropriately. (Blooms – Level 4 “Analyzing”)

- Nucleus
- Ribosomes
- ER
- Golgi
- Vacuole
- Mitochondria
- Cell Membrane



3. You have a city plan in front of you. Relate this city to a cell and the workings and organization of a eukaryotic cell. Relate the jobs of the individual organelles to that of individual businesses in a city and create a working city/cell. (Blooms – Level 6 “Creating”)



Nucleus is the municipal government because its the brain of the cell city

Golgi is the power plant because its where things are made

Vacuole is the storage tanks because its where the cell city stores wastes

Mitochondria is the energy storage because its where the cell city gets energy

Cell Membrane is the gate because it controls what goes in and out of the cell city