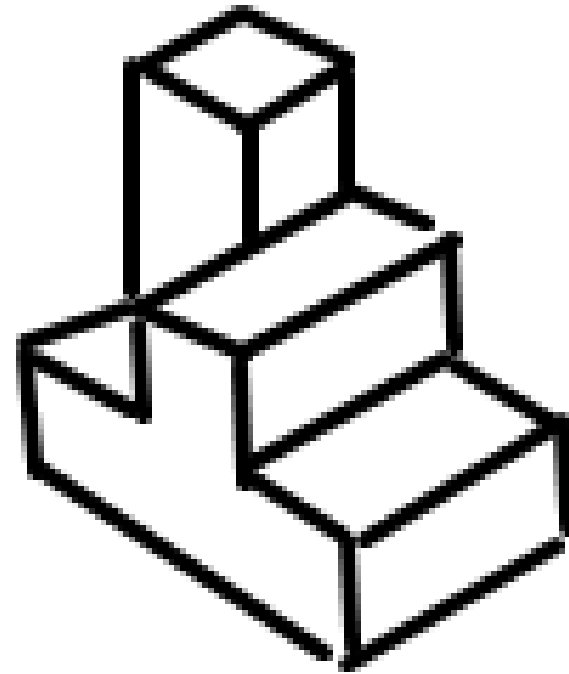
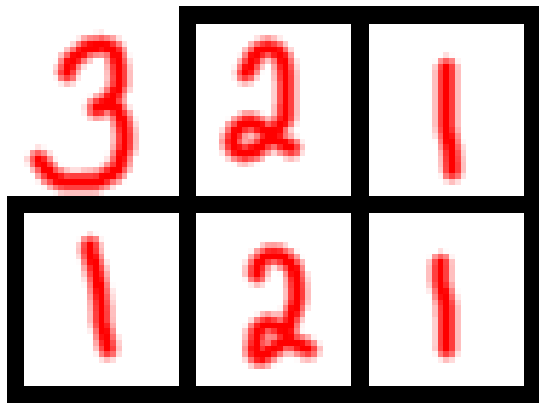


TAKS Objective 7
TEK 8.7A
Tutorial
(Grades 9 and 10)

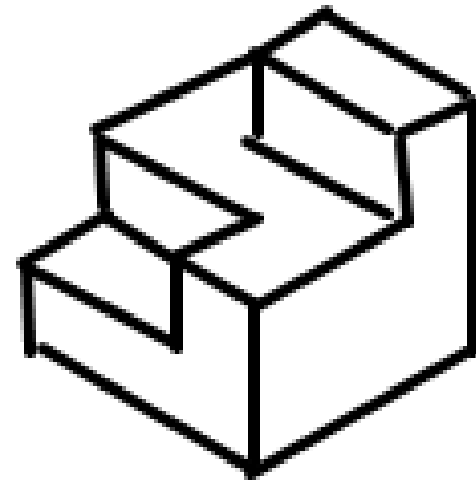
...draw three-dimensional figures from different perspectives.

You may be given either one of these
and asked to correctly match the
other one to it from several answer
choices.

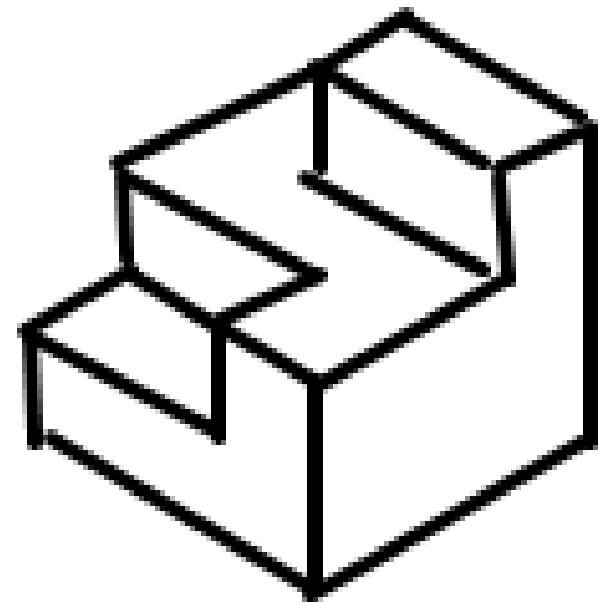
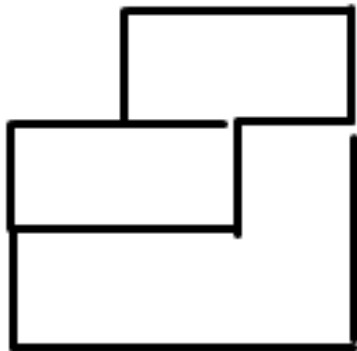
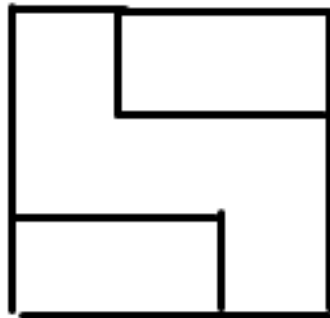
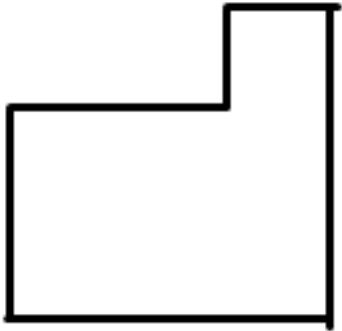


You may be given either one of these
and asked to correctly match the
other one to it from several answer
choices.

2	3	3
2	2	2
1	1	2



You may be asked to match the three views of a solid to its solid.



You should be able to identify the top, side, or front view of any 3D solid.

Sometimes, you will be given a picture and sometimes you will be given a name, such as trapezoidal pyramid.

What is known about prisms?

(We will only be looking at right prisms.)

The bases are parallel and congruent.

The lateral faces are rectangles.

What is known about pyramids?

(We will only be looking at right pyramids.)

There is only one base.

The lateral faces are triangles.